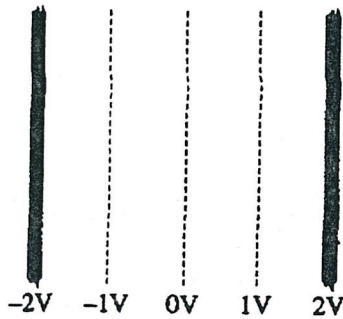
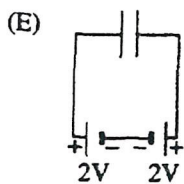
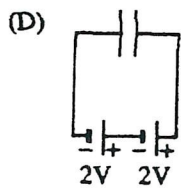
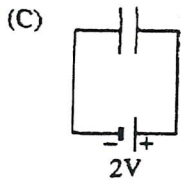
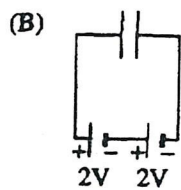
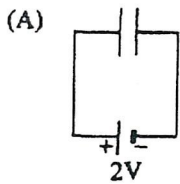


Questions 53-54



A battery or batteries connected to two parallel plates produce the equipotential lines between the plates shown above.

53. Which of the following configurations is most likely to produce these equipotential lines?



54. The force on an electron located on the 0-volt potential line is

- (A) 0 N
- (B) 1 N, directed to the right
- (C) 1 N, directed to the left
- (D) directed to the right, but its magnitude cannot be determined without knowing the distance between the lines
- (E) directed to the left, but its magnitude cannot be determined without knowing the distance between the lines